

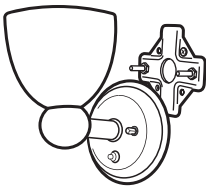
flatwire™

1-3 Sconce Installation USER MANUAL

Thank you for buying FlatWire. We hope that you will enjoy installing and using our products. FlatWire can be painted to greatly reduce the visibility of wire on your wall, or completely hidden with mesh tape, concealing compound (mud) & paint. Please read all instructions before initiating your installation.

Please visit www.FlatWireReady.com for additional products, FAQs and technical assistance.

FlatWire Products for Installation



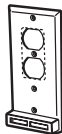
x1-3 Wall Sconces
x1-3 Glass Shades
x1-3 Mounting Brackets
x2-6 Finial Nuts



x1-3 20 watt
Halogen Bulbs
Type Q20T3



x25 feet of Low
Voltage FlatWire



x1 Face
Plate



x1
Low Voltage
Transformer



x1 Spray
Adhesive



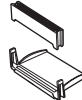
x1 Mesh
Tape



x0-3 Check Ring
Included with certain Sconces



x1-3 Glass Dome
x1-3 Retention Ring
x1-3 Spring Clip



x2-5 CPC
x2-5 CPC Back
CPC + CPC Back= Connector

x1 User Manual
x1 DVD



x2-6
Drywall
Anchors



x2-6
Phillips
Screws

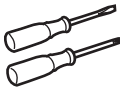


x2-6
Slotted
Screws

Tools for Installation



Pencil



Screwdrivers



Pliers



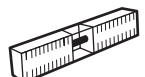
Scissors



Tape Measure

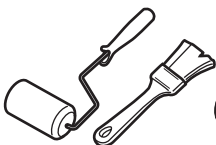


Plastic
Smoother



Level

Tools for Concealment



Roller or Paintbrush



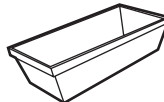
Painter's
Tape



Paint



Compound
Knife



Compound
Tray



Concealing
Compound

Important Safety Instructions

SAVE THESE INSTRUCTIONS

INSTRUCTIONS PERTAINING TO A RISK OF FIRE, OR INJURY

IMPORTANT SAFETY INSTRUCTIONS

- Read all instructions.
- Do not conceal or extend exposed conductors through a building wall.
- Do not install this system in wet locations.
- To reduce the risk of fire and burns, do not install this lighting system where the exposed bare conductors can be shorted or contact any conductive materials.
- To reduce the risk of fire and overheating, make sure all connections are tight.
- Do not install any luminaire closer than 6 inches (15.25 cm) from any curtain, or similar combustible materials.
- Turn off electrical power before modifying the lighting system in any way.
- Lighted lamp is HOT!
- **WARNING** – To reduce the risk of **FIRE OR INJURY**: Turn off power and allow to cool before replacing lamp.
- Lamp gets HOT quickly! Contact only switch/plug when turning on.
- Do not touch hot lens, guard, or enclosure.
- Keep lamp away from materials that may burn.
- Do not touch the lamp at any time. Use a soft cloth. Oil from skin may damage lamp.
- Do not operate the luminaire with a missing or damaged shield.
- Do not install this sconce lighting system in a moist or wet location.
- Only wall sconces approved for use with the FlatWire system may be installed. Fixtures must be FlatWire Ready®.
- Load the circuit of the transformer to no more than 60 watts.

Hazards & Warning For FlatWire Ready® Spray Adhesive:

DANGER:

- EXTREMELY FLAMMABLE
- LIQUID AND VAPOR.
- VAPORS MAY CAUSE FLASH FIRES.
- CONTENTS UNDER PRESSURE.
- VAPORS HARMFUL. CAUSES EYE IRRITATION.
- HARMFUL OR FATAL IF SWALLOWED.
- KEEP OUT OF REACH OF CHILDREN. DO NOT TAKE INTERNALLY

FlatWire Ready® Spray Adhesive

Cautionary Information Continued

DANGER: CONTAINS HEXANE (110-54-3), ACETONE (67-64-1), XYLENE (1330-20-7), METHYL ETHYL KETONE (78-93-3), PROPANE (74-98-6) AND ISOBUTANE (75-28-5). Causes eye, skin, nose, throat and respiratory tract irritation. Vapor harmful. May affect the brain or nervous system causing dizziness, headache, nausea or unconsciousness. Prolonged exposure to skin may cause dermatitis. May be harmful if absorbed through the skin. Prolonged vapor inhalation may result in severe physical injuries. Hexane exposure can cause peripheral nerve damage to arms and legs, which may be permanent. May be toxic to blood, liver, kidneys and reproductive system.

PRECAUTIONARY MEASURES FOR USE, HANDLING, STORAGE AND DISPOSAL:

Vapors may ignite explosively. Vapors may cause a flash fire. Prevent buildup of vapors by providing fresh air such that chemical odors can not be detected during use and while drying. Open all windows and doors. Keep away from heat, sparks and open flames. DO NOT smoke. Vapors may travel long distances to a source of ignition and flash back. Extinguish all flames and pilot lights, and turn off stoves, heaters, electric motors, burners and other sources of ignition and static electricity. Disconnect all appliances during use and until all vapors are gone. Vapors are heavier than air and will collect in low areas. Check all low areas (basements, sumps etc.) for vapor before entering. DO NOT breathe vapors. Odor is not an adequate warning for hazardous conditions. If you experience eye watering, headache or dizziness or if air monitoring demonstrates vapor levels that are above applicable limits, wear an appropriate, properly fitted respirator during use and after application. Follow respirator manufacturer's directions for respirator use. DO NOT get in eyes, on skin or clothing. Wear appropriate gloves to prevent skin contact (neoprene or nitrile). Wear goggles or protective glasses with side shields. Wash thoroughly after handling. DO NOT use or store in direct sunlight. DO NOT expose to heat or store at temperatures above 120°F. Store away from stoves and radiators. Exposure to heat or prolonged exposure to direct sunlight may cause bursting of the can. DO NOT puncture or incinerate (burn) can. Close container after use. See Material Safety Data Sheet for additional information. For a Material Safety Data Sheet contact your supplier or visit www.flatwireready.com.

FIRST AID: EYE CONTACT: Flush immediately with large amounts of water for at least 15 minutes and get medical attention immediately.

SKIN CONTACT: Wash thoroughly with soap and water.

INHALATION: If you experience difficulty breathing, leave the area to obtain fresh air. If continued difficulty is experienced, get medical attention immediately.

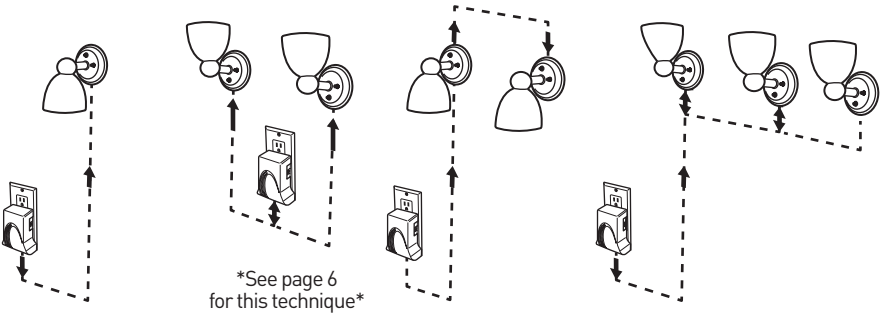
INGESTION: DO NOT INDUCE VOMITING. Call physician immediately.

CALL 1-800-327-3874 IF IRRITATION OR COMPLICATIONS ARISE FROM ANY OF THE ABOVE ROUTES OF EXPOSURE (U.S. and Canada).

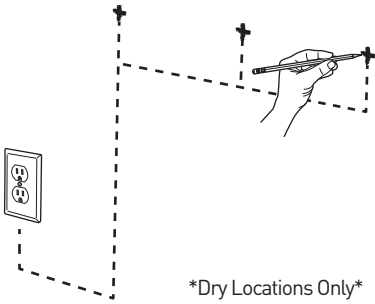
CALL 1-800-535-5053 FOR CHEMICAL EMERGENCIES such as SPILLS, LEAKS, FIRE, EXPOSURE OR ACCIDENT.

Installation Instructions

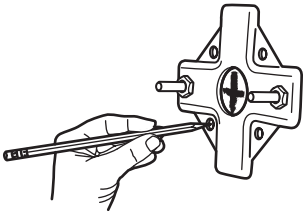
Typical FlatWire installation paths



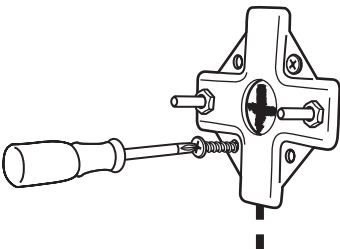
1A : Mark Sconce locations & path



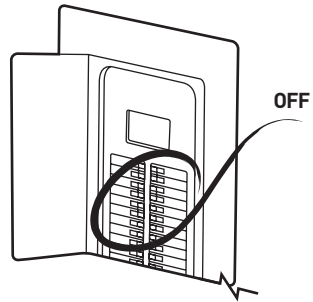
1C : Mark center of Bracket & diagonal screw holes



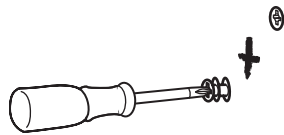
1E : Mount Bracket to wall with Phillips Screws into Drywall Anchors



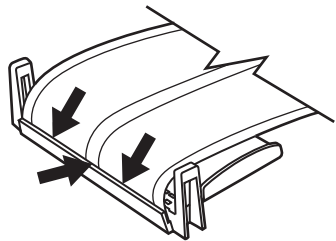
1B : Turn power OFF



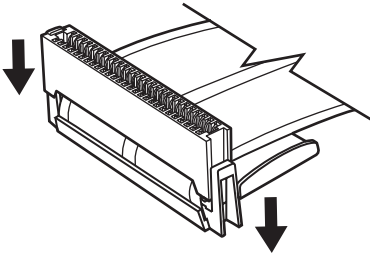
1D : Install Drywall Anchors



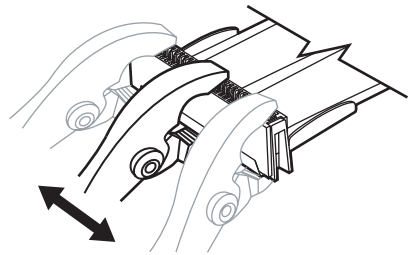
1F : Insert FlatWire into CPC Back guide slot



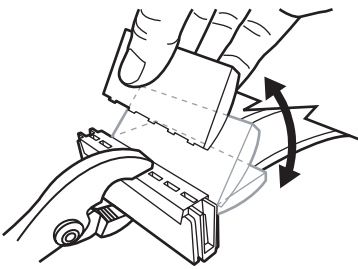
1G: Slide CPC onto CPC Back to form a Connector



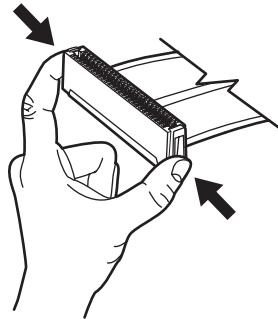
1H: Clamp Connector with pliers



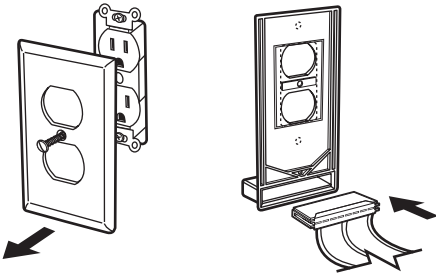
1I: Break away Connector tab



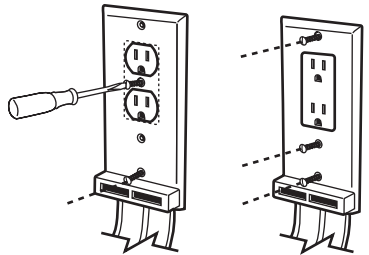
1J: Squeeze sides of Connector to ensure parts are locked



1K: Remove existing Faceplate & insert Connector into FlatWire Ready® Faceplate



1L: Install FlatWire Ready® Faceplate



2A: Shake Adhesive. Spray Adhesive to path to hide with Concealing Compound, or spray FlatWire directly for concealment with Paint. Spray 8' or less at a time. Wait 60 seconds.

If mudding



then



6"

WAIT



If painting



then



6"

Read Spray Adhesive warning on page 1

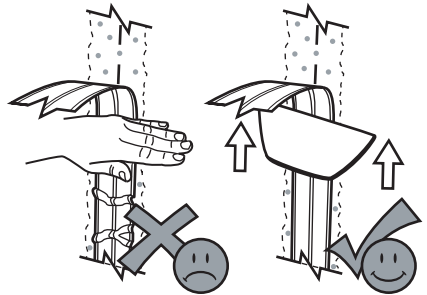
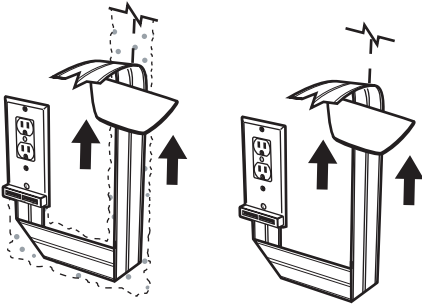
2B: When changing the direction of FlatWire, crease each fold, and spray Adhesive into the crease. Wait 60 seconds and press firmly on the fold.



Read Spray Adhesive warning on page 1

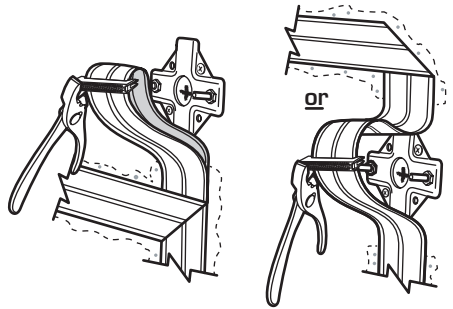
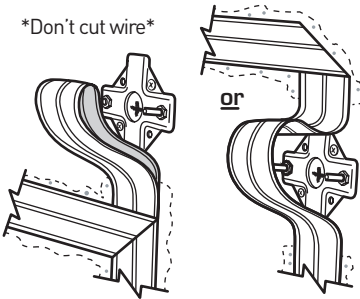
2C: Press FlatWire to path with Plastic Smoothing tool

2D: Remove air bubbles & unwanted creases

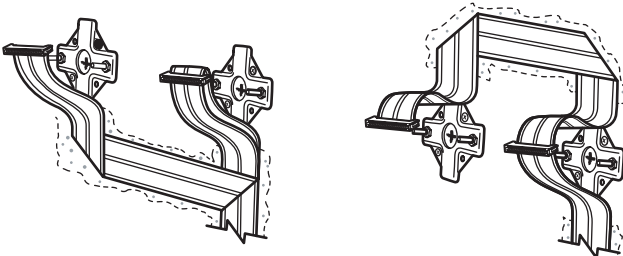


2E: Leave 6" of loose wire looped over Bracket

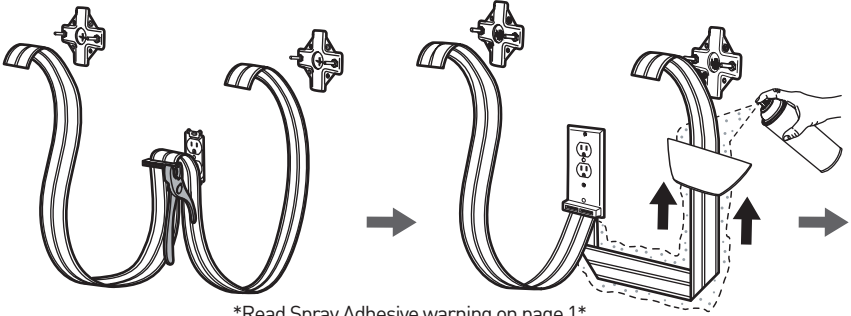
3A: Clamp Connector onto FlatWire loop & repeat 1H-1J for additional sconces



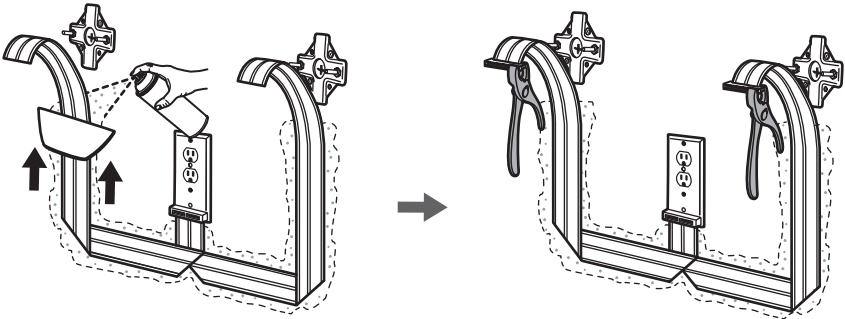
3B: Continue to 2nd and 3rd Wall Sconce by repeating steps 2A - 3B. Cut FlatWire 6" beyond 2nd Bracket & repeat steps 1F-1J.



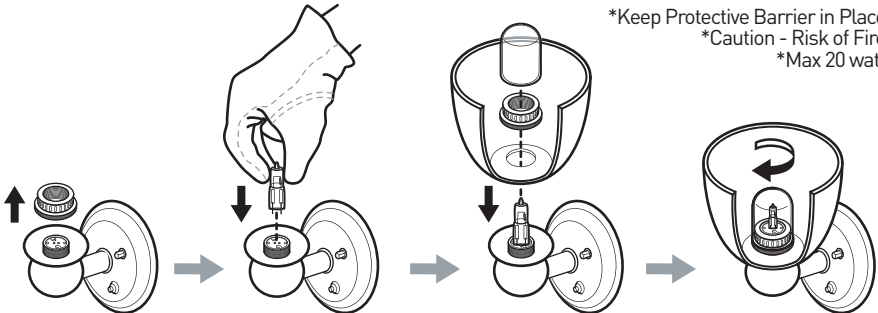
Alternative Installation: Clamp Connector to center of wire length, adhere the right & left wire length to the surface, & clamp Connectors to ends of wire.



Read Spray Adhesive warning on page 1



3C: Remove Retention Ring, & insert Halogen Bulb. Do not touch bulb with bare skin. Replace Glass Shade. Tighten Retention Ring & Glass Dome to secure Shade.



Keep Protective Barrier in Place

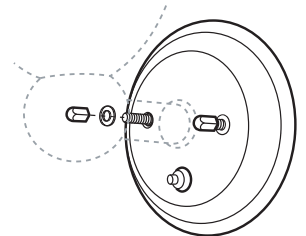
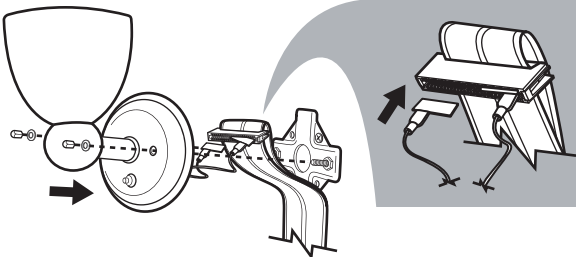
Caution - Risk of Fire

Max 20 watt

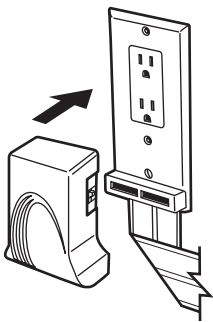
3D: Plug brass tabs into Connector, & mount to wall

3E: Tighten Finial Nuts securely

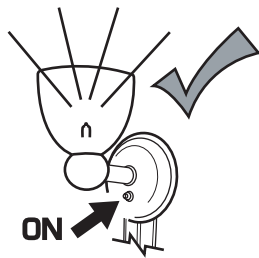
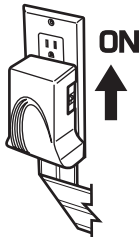
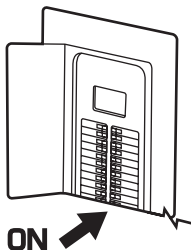
Use only with Southwire Add-a-Light System*



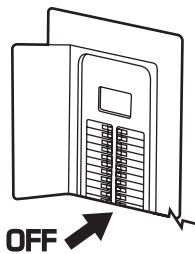
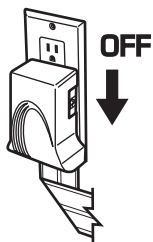
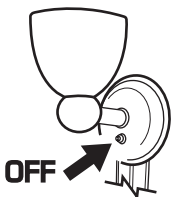
3F: Plug Transformer into Faceplate



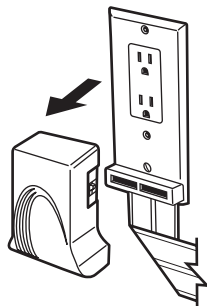
3G: Turn power ON at Sconces, Transformer, & source. Check that fixture lights



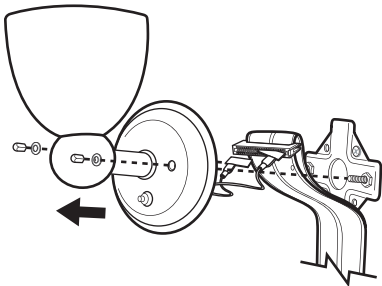
3H: Turn power OFF at Sconces, Transformer, & source



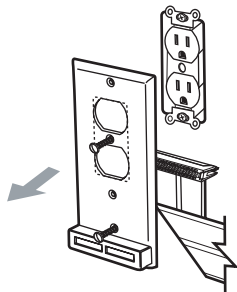
3I: Plug Transformer into Faceplate



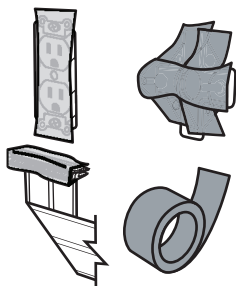
3J: Remove Sconces from wall, & unplug brass tabs from Connectors



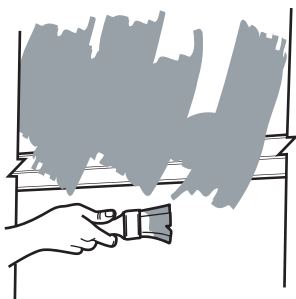
3K: Remove FlatWire Ready® Faceplate from the outlet



3L: Tape outlet, Brackets, & Connectors

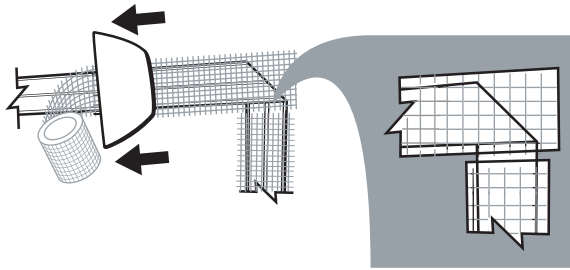


4A: Paint over FlatWire or proceed to step 4B

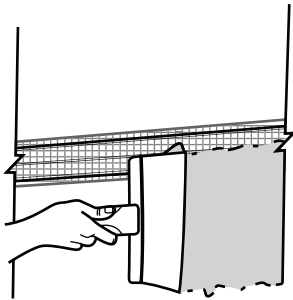


4B: Apply Wesh Tape over FlatWire (do not overlap the Mesh Tape)

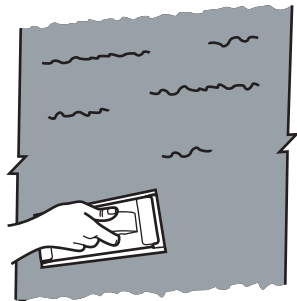
If mudding
then



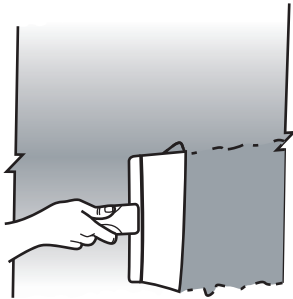
4C: Apply thin & wide layers of Concealing Compound



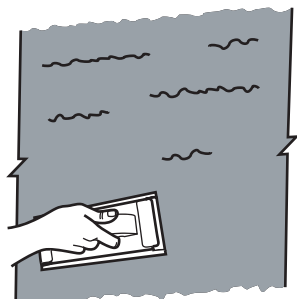
4D: Sand uneven or lumpy areas



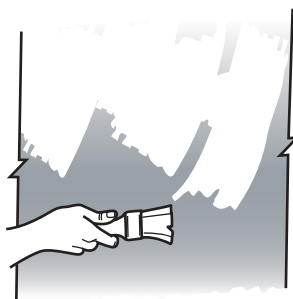
4E: Apply additional layers of Compound



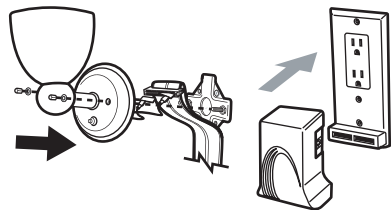
4F: Sand until blended with surface



4G: Paint

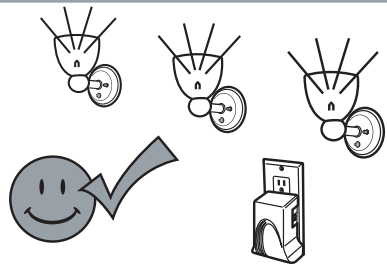
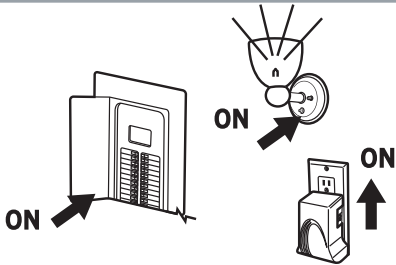


4H: Attach Sconces & Transformer



4I: Turn power on

4J: Enjoy!

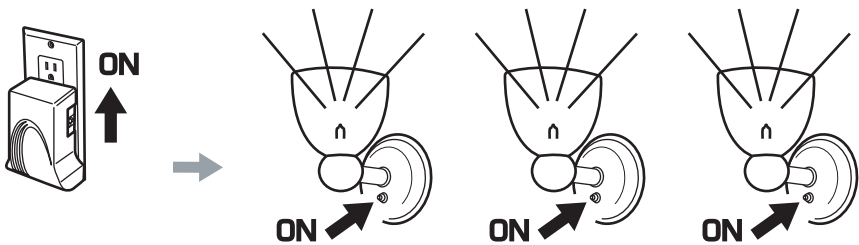


Please visit www.FlatWireReady.com for Tips & Tricks as well as FAQs about the product installation.

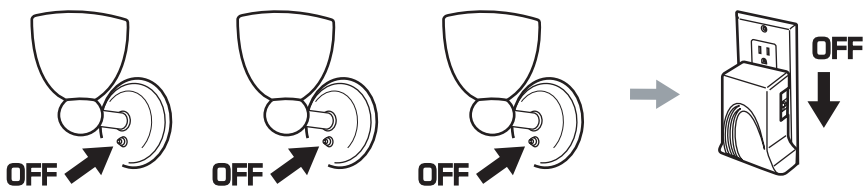
Contact FlatWire regarding the splicing of FlatWire: **1-888-FLATWIRE**

Basic Operation

Turn Power on at Transformer, & then at Sconces.



Turn Power off at Sconces, and/or at Transformer.



Troubleshooting: Tips & Tricks

<p>Finial Nut cannot be removed from Base.</p>	<p>Sometimes the locking fluid for the Base Studs wicks up the Stud threads thereby locking the Finial Nut in place and not allowing its removal with finger pressure alone.</p>	<p>If the Finial Nut is hexagonal in shape, lightly apply pressure in counter-clockwise direction with the correct size wrench/ socket or with pliers wrapped with dish-cloth around teeth of pliers (to protect surface finish of Finial Nut).</p> <p>.....</p> <p>If the Finial Nut is spherical, lightly apply pressure in counter clockwise direction with pliers wrapped with dish-cloth around teeth of pliers (to protect surface finish of Finial Nut).</p>
--	--	---

***** CAUTION*** DO NOT REMOVE SAFETY WARNING FROM FIXTURE!**

<p>Glass Shade will not fit into place in Fixture Base or is not secure when mounted.</p>	<p>Fixture is provided with Retention Ring already installed on Socket.</p> <p>.....</p> <p>Engineering design sometimes causes Glass Shade to only fit in one orientation relative to Fixture Base.</p> <p>.....</p> <p>Flash from the manufacturing process may cause thread interference with the Retention Ring and Socket.</p>	<p>Be sure to remove Retention Ring PRIOR to installing Glass Shade on Socket.</p> <p>.....</p> <p>Rotate the Glass Shade until it drops into place. If desired, relocate safety warnings inside Glass Shade.</p> <p>.....</p> <p>Remove Glass Shade and install ONLY the Retention Ring allowing the Retention Ring to move the FULL EXTENT of the Socket threads.</p> <p>.....</p> <p>If you have purchased multiple sconces, try swapping Retention Rings among them.</p>
<p>Glass Dome will not fit into place on the Retention Ring (Check Ring).</p>	<p>Spring Clips are used to secure the Glass Dome onto the Retention Ring. It is possible that too many Spring Clips were applied to the Retention Ring during manufacture.</p>	<p>See if there are more than one Spring Clips between the Glass Dome and Retention Ring. Only one is required to secure the Glass Dome in place.</p>
<p>Fixture components are not aligned properly.</p>	<p>Package contents can settle and vibrate during transportation causing minor alignment issues.</p>	<p>Once Fixture is mounted, lightly twist portions of Fixture by hand until you are satisfied with the appearance of your installation.</p>
<p>Is Plastic Washer between Finial Nut and Fixture Base necessary?</p>	<p>Plastic washer is to protect Fixture Base from being marred by Finial Nut.</p>	<p>Once Fixture is mounted the plastic washer can be discarded as it is not necessary to the function of the fixture.</p>

Before Returning this Product PLEASE CALL: 1-888-FLATWIRE

Limited Warranty

What is covered and for how long:

Southwire Company warrants that this Product will be free from defects in materials and workmanship for a period of one year from the date of sales receipt (hereafter "Warranty Period"). Southwire Company will either repair or replace this Product (at our discretion) without charge if the Product should prove defective during the Warranty Period. This is customer's sole and exclusive remedy for Products found to be defective during the Warranty Period. Southwire Company and its affiliated companies will not be responsible for costs of removal, costs of reinstallation, or other labor and material costs which result from defective Products.

What this warranty does not cover:

Southwire Company and its affiliated companies will not be liable for any damage to the Product which occurs outside the Warranty Period. Additionally, Southwire Company and its affiliated companies will not be liable for any damage to the Product which occurs during the Warranty period resulting from unauthorized use, misuse, commercial use, exposure to heat, bright light, direct sunlight, liquids, sand or other contaminants, contact with solvents or cleaners, repairs by any one other than Southwire Company or its affiliated companies, accidents, alterations, abuse, acts of God or failure to follow the instructions with respect to installation or operation which can be found at www.flatwireready.com and are included with the Product at the time of sale.

Use or installation of this Product without the recommended brand of adhesive will void this warranty.

The Product is intended for indoor use only. Use or installation of the Product outdoors will void this warranty. The Product is intended to remain in its initial installation location throughout the duration of the Product's life. Removal of the Product from its original installation location will void this warranty and Southwire Company and its affiliated companies will not be liable for damage caused to walls, furniture, or other structures as a result of removal of the Product from its original installation location.

Duration of Implied Warranties:

EXCEPT TO THE EXTENT PROHIBITED BY APPLICABLE LAW, ANY IMPLIED WARRANTY OF MERCHANTABILITY OR FITNESS FOR A PARTICULAR PURPOSE ON THIS PRODUCT IS LIMITED IN DURATION TO THE DURATION OF THIS WARRANTY.

Limitation of liability:

SOUTHWIRE COMPANY AND ITS AFFILIATED COMPANIES ARE NOT LIABLE FOR INCIDENTAL DAMAGES, CONSEQUENTIAL DAMAGES, OR LOSS OF PROFITS OR REVENUE RESULTING FROM BREACH OF ANY WARRANTY ON THIS PRODUCT.

What to do to claim warranty service:

If you have performed all troubleshooting steps in this User Manual or online at www.FlatWireReady.com and still cannot get your Product to function properly, follow these steps:

Contact the Southwire Company Customer Service Department at 1-888-FLATWIRE (1-888-352-8947).

Be prepared to give a detailed explanation of the problem you are experiencing and the steps you have taken to rectify the problem.

Obtain a Return Material Authorization (RMA) Number if your Product is still under warranty, and you wish to return it to Southwire Company for repair or replacement.

The RMA number received from customer service must be clearly posted on the outside of the package. Products must be returned with the original packaging and must contain a copy of an original sales receipt containing the price of the returned Product(s) and the completed RMA form provided by a customer service representative.

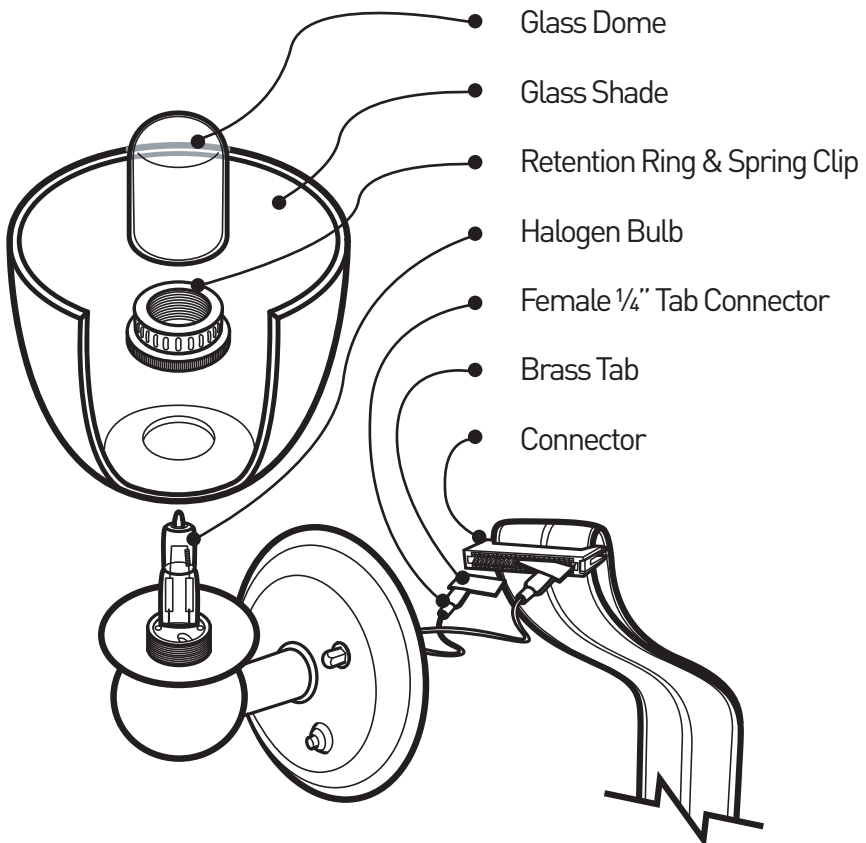
Additionally, all of the manuals and other items included with the Product must be returned with it. Southwire Company will pay for return shipping provided that you obtain an RMA number and arrange for shipment through Southwire Company.

Customer Service at 1-888-FLATWIRE (1-888-352-8947). Southwire Company will ship the repaired Product or a replacement Product within ten (10) days of Southwire Company's receipt of the Defective Product.

If any parts are missing please call **1-888-FLATWIRE** (1-888-352-8947).

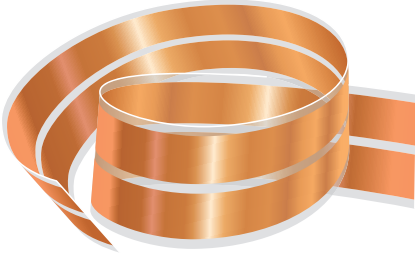
Technical Specifications

Transformer	Input Output	120 volt 60 Hz .5 amp 12 volt 60 watts
Sconce/Fixtures	12 volt 20 watt bulb maximum each 3 Fixtures maximum per Transformer	
UL listed as Low-voltage Lighting Systems, Power Units, Luminaires and Fittings		
Under E-254977		

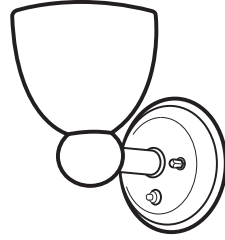


Other FlatWire Products

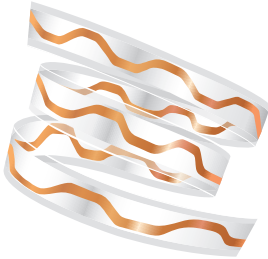
Speaker



Low Voltage Lighting Fixtures



Subwoofer



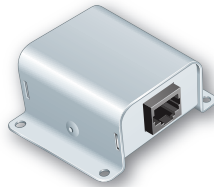
Component Video



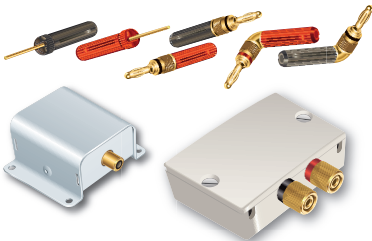
S-Video & Audio/Video



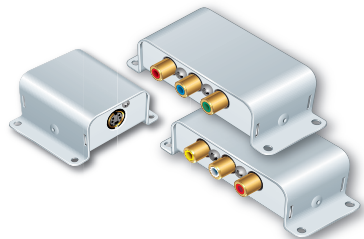
Data Connector



Audio Connectors



Video Connectors



Generic Sconce R1



Southwire[®]

Southwire Company
One Southwire Drive
Carrollton, Georgia 30119

www.FlatWireReady.com